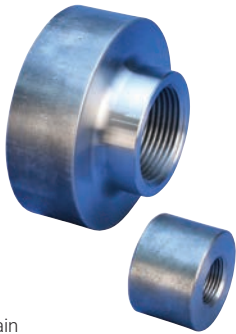


nVent LENTON D16 Mechanical Anchor

Taper-Threaded Terminator



Finish: Plain
 Material: Steel
 Design Version: Worldwide (Globally Available Materials)
 100% U.S. Domestic Content: Yes



FEATURES

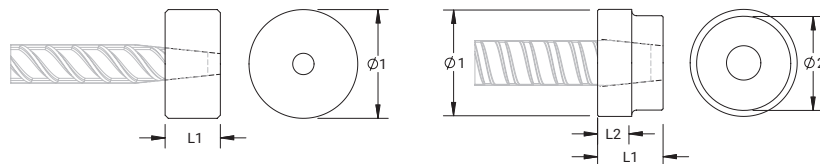
- Replaces conventional hooked reinforcing bar
- Simplifies reinforcing bar placement and lowers placing costs
- Head area exceeds 5x bar area (net 4x)

Catalog Number	Rebar Size, US	Rebar Size, Canada	Diameter 1 Ø1	Diameter 2 Ø2	Length 1 L1	Length 2 L2	Unit Weight
EL12D16	#4	10M	1.38"	–	0.73"	–	0.3 lb
EL16D16	#5	15M	1.50"	–	0.94"	–	0.4 lb
EL20D16	#6	20M	1.88"	–	1.38"	–	0.9 lb
EL22D16	#7	–	2.00"	–	1.48"	–	1.1 lb
EL25D16	#8	25M	2.25"	–	1.57"	–	1.5 lb
EL28D16	#9	30M	2.75"	–	1.65"	–	2.4 lb
EL32D16	#10	–	3.00"	–	1.79"	–	3.1 lb
EL36D16	#11	35M	3.75"	–	2.05"	2.31"	4.1 lb
EL43TD16	#14	45M	4.00"	3.15"	2.64"	1.64"	6.73 lb
EL57TD16	#18	55M	5.13"	3.15"	3.31"	2.41"	12.74 lb

Designed to Meet: ACI 318; AS3600; ASTM A970

Bar dimensions and weights listed may vary by region. Coupler sizes not shown may be available by special order. Contact your nVent LENTON representative for more information.

Thread does not need to be flush with end of nVent LENTON Terminator. Thread may be +/- 2 threads from backside of coupler.



Our powerful portfolio of brands:

CADDY ERICO HOFFMAN ILSCO RAYCHEM SCHROFF